
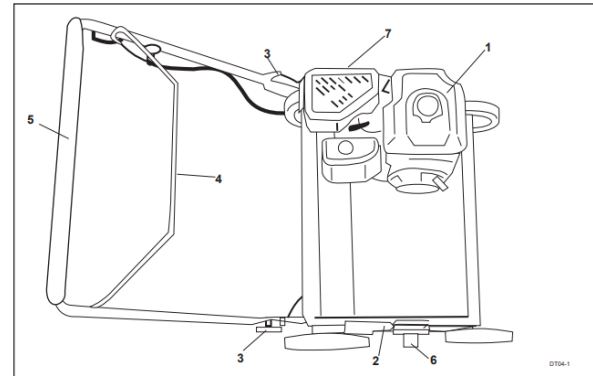


Lawn de-thatcher

USE COMMON SENSE AND PLENTY OF IT

1. **DO NOT** allow any person to operate lawn de-thatcher without first reading and understanding the safety precautions and operating instructions. **KNOW THE CONTROLS AND HOW TO STOP THE LAWN DE-THATCHER QUICKLY IN AN EMERGENCY.**
2. **NEVER** allow children to operate the lawn de-thatcher.
3. **ALWAYS** wear protective clothing when operating the lawn de-thatcher. This includes, but not limited to: safety glasses; loose fitting gloves; steep capped boots and hearing protection. **NEVER** wear loose fitting clothing or jewellery when operating the lawn de-thatcher. Keep all clothing away from moving parts. Items could become caught in the machine, resulting in injury.
4. **ALWAYS** operate the lawn de-thatcher in a well-lit area.
5. **ALWAYS** operate lawn de-thatcher on ground only. Police the area before use. Remove any foreign objects in the working area - bricks, rocks, wire and sticks. Locate and mark any sprinkler heads, water pipes, gas lines, electrical and telephone cables or any other hazard either below or above ground.
6. **DO NOT** allow other persons near the lawn de-thatcher. It is up to the operator to keep bystanders and animals a minimum of 6 metres away from the machine whilst in operation.
7. **NEVER** operate the lawn de-thatcher when fatigued. **ALWAYS BE ALERT.** If you become tired while operating the lawn de-thatcher, take a break. If you have any type of physical or mental condition that may be aggravated by strenuous work, consult with your physician before you operate this equipment. **NEVER** operate the lawn de-thatcher under the influence of medication, alcohol or drugs.
8.  **ALWAYS KEEP YOUR HANDS, FEET AND BODY AWAY FROM THE DIGGING AREA WHILE THE ENGINE IS RUNNING.**
9. **NEVER** operate the unit without safety guards in place and in working order. Keep the unit well maintained and in good working order.
10. **DO NOT** leave the machine unattended while the engine is running.
11. **DO NOT** overspeed the engine or alter the governor settings. Excessive speed is dangerous and will shorten engine life.
12. **NEVER** operate the lawn de-thatcher in an enclosed area. Engine exhaust contains carbon monoxide, an odourless and tasteless poison.
13. **STOP** the engine and disconnect the spark plug lead(s) and allow the engine to cool before inspecting or performing maintenance on the lawn de-thatcher.



- | | |
|--------------------------------|----------------|
| 1. Engine | 5. Handle |
| 2. Depth lever | 6. Shaft Guard |
| 3. Knob for collapsible handle | 7. Belt shield |
| 4. Clutch bail | |

Stay alert, don't get hurt

14. REFUELLING

- Shut off engine. **DO NOT REFUEL AN ENGINE WHILE OPERATING MACHINE!**
- **ALLOW** engine to cool down for a minimum of 5 minutes.
- **USE UNLEADED FUEL ONLY.**
- **USE CLEAN, FRESH UNLEADED FUEL**
- Do not mix oil with unleaded fuel.
- Do not overfill fuel tank. Allow space for fuel expansion.
- Do not smoke.
- Allow no naked flame or hot material in refuelling area.
- Use only approved fuel containers and funnels. Remember, fuel is a potential hazard.

REMEMBER: FUEL IS A POTENTIAL FIRE HAZARD - HANDLE WITH CAUTION.

SAFETY IS EVERYBODY'S BUSINESS

You alone know the operational demands and special conditions affecting the equipment in your situation and therefore assume the responsibility for developing, carrying out and enforcing the safety concepts which apply to your own operation to effect the greatest safety for yourself and the people around you.

MANDATORY PERSONAL PROTECTIVE EQUIPMENT



ear protection



goggles




protective clothing



steel cap boots

BEFORE USE

1. Ensure that all grass and weeds have been cut 1/2 inch below normal. 
2. Police the area. Remove any foreign objects from the area.
3. Identify and mark the location of sprinkler heads, gas pipes, telephone cables, etc.

Do not under any circumstances attempt any repairs. Please call your local Hiredepot branch for assistance.

This operating and safety brochure is intended as a guide only for the safe operation of this equipment. It does not override license requirements nor is it a substitute for structured operating lesson. If you are unsure about any aspect of the equipment, its capabilities or the correct usage, please call our trained staff for instruction or any questions you may have regarding the safe operation of this equipment.

When service matters.
hiredepot.com.au

GLEN IRIS
70 High St
9885 4431

FAIRFIELD
323 Darebin Rd
9499 9955